



**Features**

- Flush-mounted separating diaphragm of stainless steel, welded by laser
- Nominal pressure PN 400
- Volume optimized diaphragm base
- Dead-zone free design
- Connection of measuring instrument:
  - directly welded
  - directly screwed
  - with temperature decoupler
  - with capillary

**Options**

- Material certificate acc. to EN 10204-3.1
- Special materials upon request
- Connection to zone 0 with flame arrester

**Application area**

- Chemical and petrochemical industry
- General process technology
- Machinery construction

**Application**

Suitable for mounting to bourdon tube pressure gauges and pressure transmitters. The screw-type diaphragm seal is suited for measuring aggressive, highly viscous media and for high process temperatures.

**Technical Data**

**Process connections**

screw-in thread per DIN 3852,  
model A, G1/2 A, G3/4 A, G1A, G2A  
other connections upon request

**Diaphragm seal material**

standard material: st. steel mat.no.  
1.4404 (316L)  
Special versions and materials upon  
request.

**Nominal pressure**

PN 400

**Nominal widths**

see table

**Separating diaphragm**

standard material stainless steel.  
Further materials see order code

**Measuring instrument connection**

· directly welded/screwed  
· with temperature decoupler  
· with capillary  
see order code  
material stainless steel  
Suitable welding adapter see data  
sheet T6-025

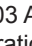
**Process temperature**

dependent on measuring system,  
pressure transmission fluid and  
installation.

**Pressure transmission fluid**

see technical instruction TA\_038.  
Standard according to order code

**Ex-approval**

connection to Zone 0 with flame  
arrester  
PTB 03 ATEX 4032 X  IIG IIC  
declaration of conformity  
KE 17060301-03

**Installation instructions**

see technical instruction TA\_031.

**Weight**

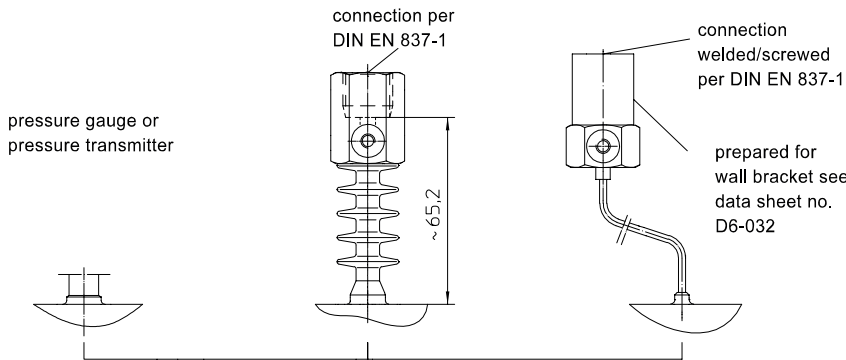
with measuring instrument connection  
G1/2  
see table page 2

**Measuring instrument connection**

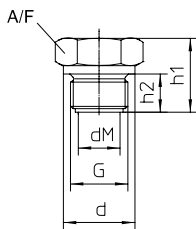
directly welded  
Code: A400

temperature decoupler  
Code: A100

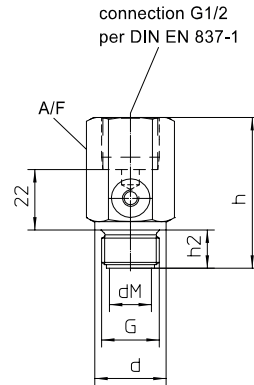
capillary  
welded Code: B40../B50..  
screwed Code: B20../B10..



**Dimensions**



| dimensions (mm) |    |      |    |    |    |     |                   |
|-----------------|----|------|----|----|----|-----|-------------------|
| G               | d  | dM   | h  | h1 | h2 | A/F | weight approx. kg |
| G 1/2 A         | 26 | 17,5 | 55 | 27 | 14 | 27  | 0.2               |
| G 3/4 A         | 32 | 22,6 | 57 | 31 | 16 | 32  | 0.3               |
| G 1 A           | 39 | 27   | 59 | 33 | 18 | 41  | 0.5               |
| G 1 1/2 A       | 55 | 40   | 61 | 40 | 22 | 55  | 1.0               |
| G 2 A           | 68 | 51   | 64 | 42 | 24 | 70  | 1.6               |



**Order Details** - please give additional specifications for models not listed -

**Diaphragm seal for general application screw-in thread**

|   |   |                 |                                      |         |
|---|---|-----------------|--------------------------------------|---------|
| process <sup>1</sup><br>connection<br>PN 400            | · G 1/2 A   |                 | DE118 .                              |         |
|   | · G 3/4 A   |                 | DE128 .                              |         |
|   | · G 1 A   |                 | DE138 .                              |         |
|   | · G 1 1/2 A   |                 | DE158 .                              |         |
|   | · G 2 A   |                 | DE168 .                              |         |
| design  | · standard  |                 | 0                                    |         |
|   | · zone 0  |                 | 2                                    |         |
| connection of<br>measuring<br>instrument                | · directly  | · welded        | A400 .                               |         |
|   |   | · screwed G 1/2 | A300 .                               |         |
|   | · with temperature decoupler A100   |                 | · screwed G 1/2                      | A100 .  |
|   | · with capillary  |                 | · welded                             | B40 . . |
|   |   |                 | · screwed G 1/2                      | B20 . . |
| · with capillary and stainless steel<br>protective tube |   | · welded        | B50 . .                              |         |
|   |   | · screwed G 1/2 | B10 . .                              |         |
| material wetted<br>parts                                | · stainless steel mat.-no. 1.4404/1.4435 (316L)                               |                 | 1                                    |         |
|   | · diaphragm st. steel mat.-no. 1.4435 (316L), basic body 1.4404 (316L)        |                 | 7                                    |         |
|   | · diaphragm Tantalum, basic body st. steel mat.-no. 1.4404 (316L)             |                 | 2                                    |         |
|   | · Hastelloy C 276   |                 | 3                                    |         |
| system filling <sup>2</sup>                             | <u>pressure transmission fluid</u>  |                 | <u>temperature range<sup>3</sup></u> |         |
|   | · synthetic oil free of silicone FD1, standard                                |                 | -10...+140 °C                        |         |
|   | · synthetic oil free of silicone FD1,<br>pls. specify temperature range, max. |                 | -50...+230 °C                        |         |
|   | · high temperature oil FV3H   |                 | -10...+400 °C                        |         |

| capillary length |                |
|------------------|----------------|
| length<br>m      | order-<br>code |
| 1                | 11             |
| 1.6              | 12             |
| 2.5              | 13             |
| 4                | 14             |
| 5                | 21             |
| 6                | 15             |
| 7                | 23             |
| 8                | 16             |
| 10               | 17             |
| others           | 9              |

**additional features (to be indicated in case of need, only)**

material certificate acc. to DIN EN 10204- 3.1, wetted parts W1020

**Order code (example):** DE1380 A4007 L22

<sup>1</sup> other designs upon request

<sup>2</sup> For further information please check technical instruction TA\_038.  
Please state temperature range to allow an accurate calculation of the system.

<sup>3</sup> max. temperature of liquid filling for abs. pressure > 1 bar