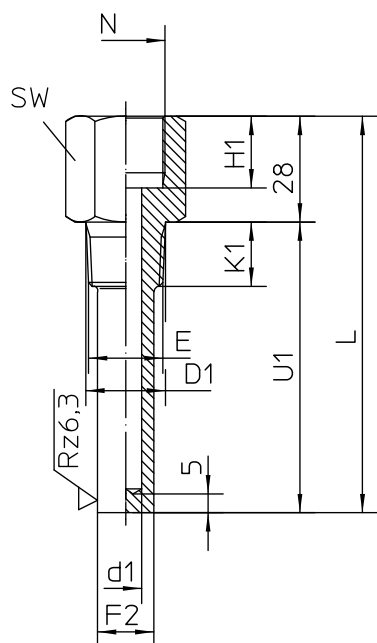


**Thermowell screw-in type per DIN 43772,
form 7, solid drilled, female thread, Type series HA8020**



Materials

| | material-no. | T max. | P max.* |
|-----------------|--------------|--------|---------|
| stainless steel | 1.4571 | 550°C | 150 bar |
| stainless steel | 1.4404 | 550°C | 150 bar |

* static conditions of use

Other materials upon request.

The thermowells are available with material certificate per DIN EN 10204-3.1 and are suitable for connection to Zone 0 according to the technical instruction TA_033.

Upon request a calculation for thermowells can be made (for static or dynamic application) with certificate.

Length L1 of the temperature detecting element (dial indicating thermometers)

screwed plug, rotating, internal gasket $L1 = U1 - A$

screwed plug, fixed, external gasket $L2 = U1 + B$

DIN-lengths of the thermowells

(pls specify deviating lengths)

| L mm | U1 mm |
|------|-------|
| 110 | 82 |
| 170 | 142 |
| 260 | 232 |
| 410 | 382 |

Order details

Thermowell screw-in type per DIN 43772, form 7, solid drilled, female thread, Type series HA8020

| Order code HA8020 | | | | | | | | | | | |
|--|-------------------|-----------------------------------|----------------------------|----------------|-----------|----|-----|----|----|---|----|
| HA8020 Screw-in thermowell per DIN 43772 for thermometers with female thread | | | | | | | | | | | |
| | | screw in thread E | instrument screw threads N | bore hole Ø d1 | pipe Ø F2 | D1 | K1 | H1 | SW | A | B |
| B11 | thermowell form 7 | 1/2-14 NPT | G 1/2 | 7 | 17 | - | ~20 | 19 | 27 | 2 | 18 |
| B12 | | | | 9 | 17 | | | | | | |
| B13 | | | | 11 | 17 | | | | | | |
| B20 | | 3/4-14 NPT | G 1/2 | 7 | 17 | - | ~21 | 19 | 32 | 2 | 18 |
| B21 | | | | 9 | 17 | | | | | | |
| B22 | | | | 1 | 19 | | | | | | |
| A99 | pls specify | | | | | | | | | | |
| G10 | material | stainless steel 1.4571 (standard) | | | | | | | | | |
| G11 | | stainless steel 1.4404 | | | | | | | | | |
| G99 | | pls specify | | | | | | | | | |

| additional features (to be indicated in case of need, only): | |
|--|---|
| W1220 | combined pressure and leak test (pls specify test pressure) |
| W1020 | material certificate per DIN EN 10204 -3.1 |
| W2502 | suitable for connection to Zone 0 acc. to TA_033 |

Order code (example): HA8020 - B11 - G10 - W1020 - U1=...
(length U1 pls specify in mm; min. 80, max. 382 mm)