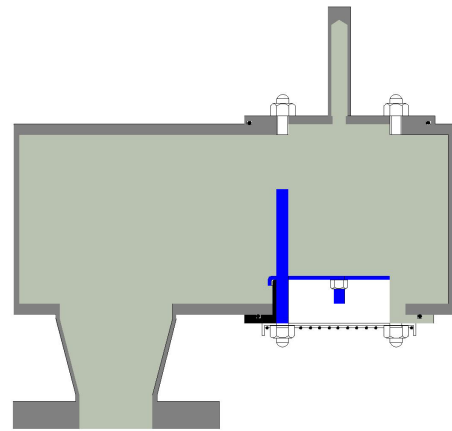


B200 Series

Vacuum Relief Valves

Product Highlights

- Weight Loaded
- Standard Vacuum settings - 2 mbarg to - 100 mbarg
- Size range 2" (50 mm) - 12" (300 mm)
- Side Mounted Flanged Option
- Standard body materials - Aluminium, Carbon steel, Stainless steel
- Standard trim material - Stainless steel
- Diaphragm material - PTFE
- Removable seats
- Standard full form flanges - ANSI / DIN / JIS / Specials
- Lightweight design
- Steam Jackets
- Proximity Switches to indicate pallet lift
- Tri clamp / screwed connections available
- Alternative materials for hazardous applications
- Non standard applications consult factory



B200

Features

Low cost maintenance

Lightweight design provides easy handling whilst interchangeable components ensure standard parts are easily replaced

Testing / Quality

All products are factory tested and fully certified.

Self Draining

All products are designed so that any condensate drains away from seating areas.

Low leakage

Standard seating design ensures minimum leakage of less than 1 scfh at 90% of set pressure.

Internal Parts

Internal parts are stainless steel as standard. Non standard materials available upon request.

Connections

All valves are supplied with full form flanges to meet individual requirements. Other connections are available upon request.

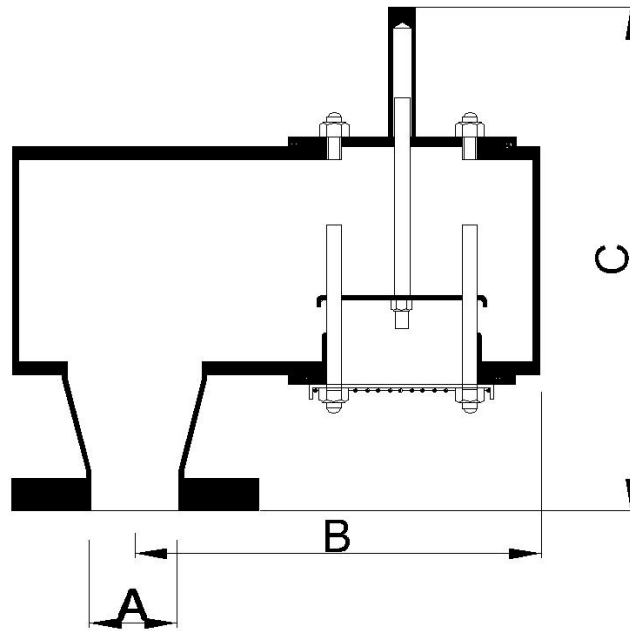
Non Standard Applications

There are numerous options available for special applications. Exotic materials such as Hastelloy and various plastics can be offered to suit the most hazardous of environments. Special coatings can be applied for extreme service. For low temperature duties, internal parts can be PTFE coated to prevent seizure.

See separate section in catalogue.

* All products are subject to continuous development and subsequently 3B Controls reserve the right to change specifications outlined in this catalogue without notification.

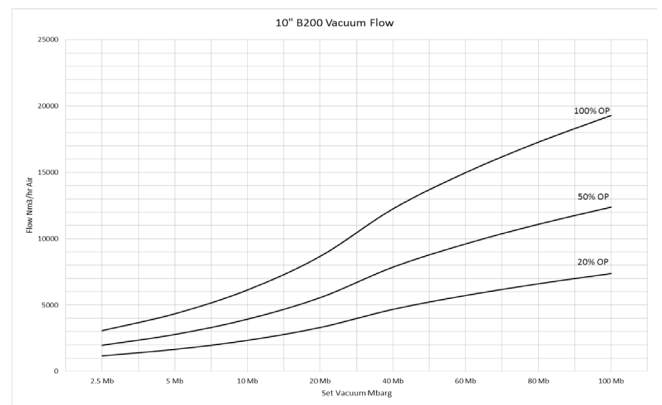
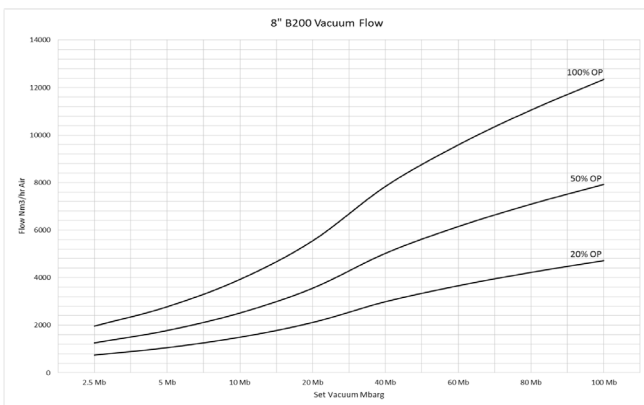
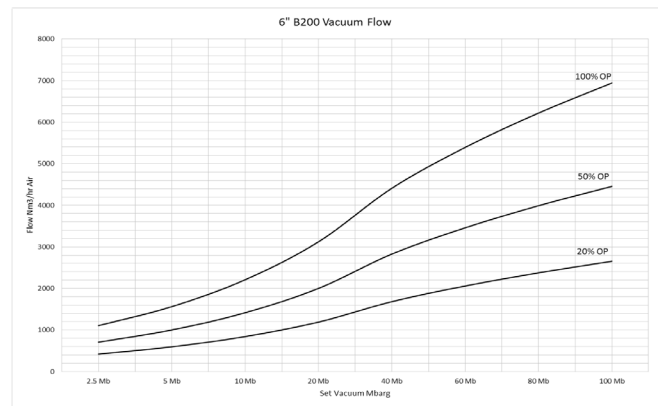
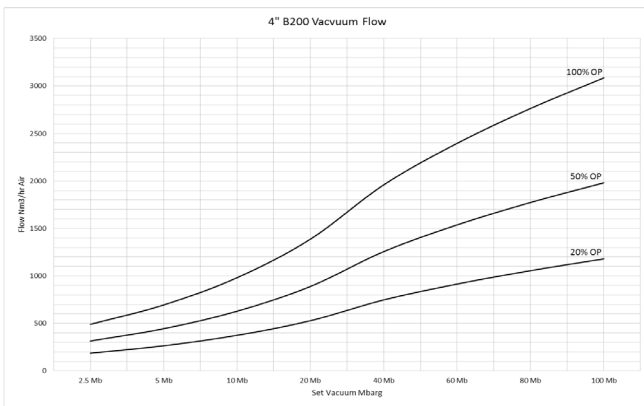
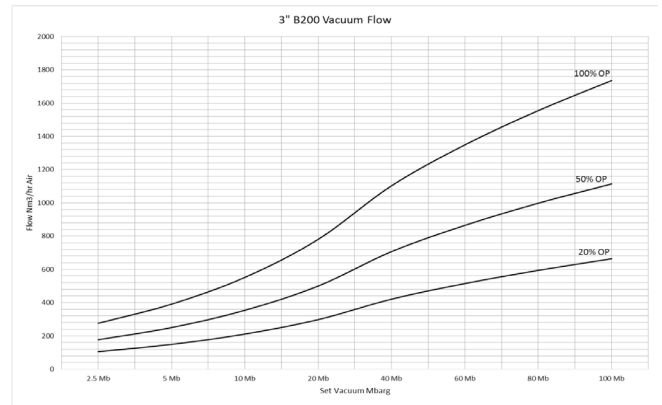
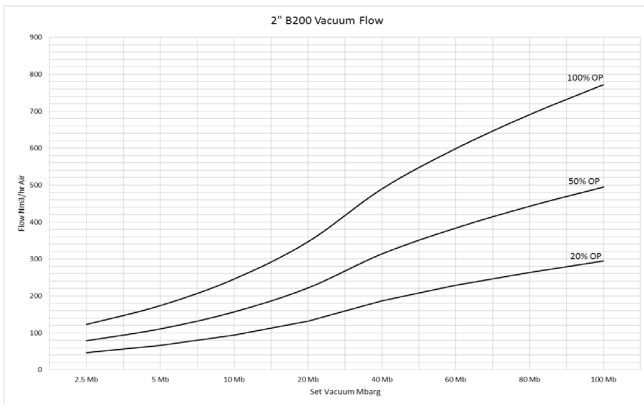
B200 Series Vacuum Relief Valves



Dimensions

NOM SIZE	A	B	C
50(2")	54	252	252
80(3")	84	308	308
100(4")	108	355	356
150(6")	161	516	516
200(8")	211	576	576
250(10")	255	701	490
300(12")	305	741	535

B200 Series Vacuum Relief Valves



B200 Series Vacuum Relief Valves

