



BALL VALVE

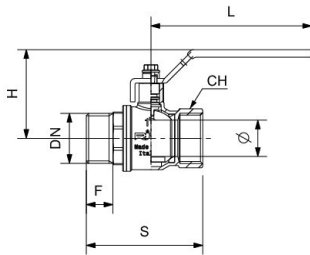
Type 4331



4331

Ball valve M/F
full bore
steel lever handle

Tech drawings and tables



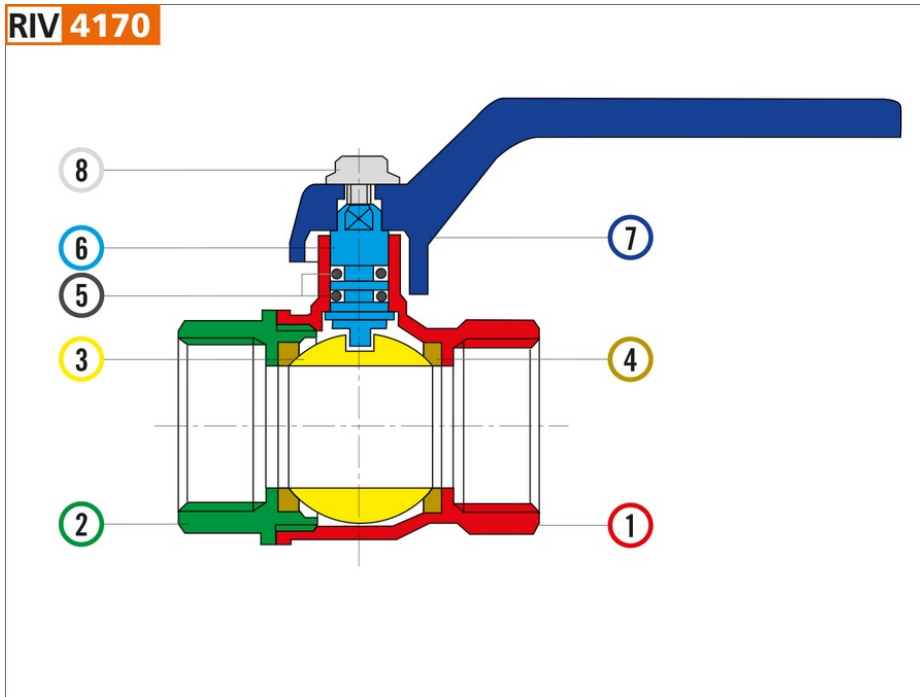
DN	Codice	Ø	H	S	L	F	PN	KG	P/box
1/4"	024331000002	8	45	38	80	10,5	40	0,114	50
3/8"	024331000003	10	45	42	80	10,5	40	0,134	50
1/2"	024331000004	14,5	47	48	80	13	40	0,168	30
3/4"	024331000005	19	53	57	90	14	32	0,267	10
1"	024331000007	24	58	69	90	17	32	0,398	10
1"1/4	024331000008	30,5	69	79	120	17	25	0,656	8
1"1/2	024331000009	37	81	89	135	19	25	0,938	6
2"	024331000011	47	94	109	160	21	25	1,523	4
2"1/2	024331000013	60	106	126	160	30	25	2,137	1
3"	024331000014	75	142	147	265	33	16	3,874	1
4"	024331000016	94	160	177	265	40	16	6,606	1

Approvals



Technical data

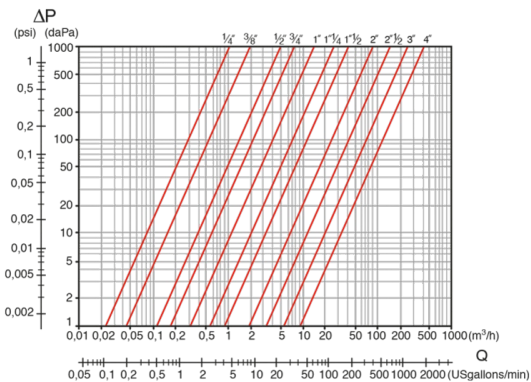
RIV 4170



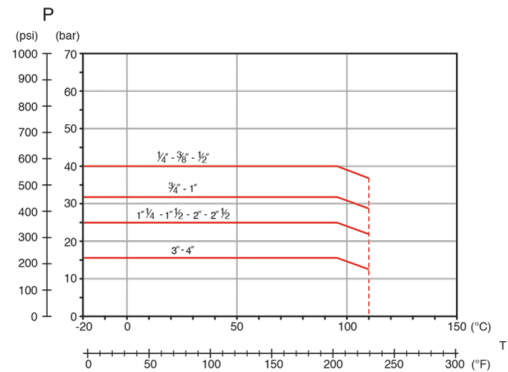
Materials				
1	Body	Brass	CW617N	Nickel-plated
2	Body end	Brass	CW617N	Nickel-plated
3	Ball	Brass	CW617N	Chrome-plated
4	Seats	P.T.F.E.		
5	O-Ring	NBR		
6	Stem	Brass	CW614N	
7	Lever	Aluminium		
8	Screw	Steel		Zinc-plated

Connections	ISO 228/1, ANSI B1.20.1 (NPT)
Limit	-20°C (without liquid) +110°C
Notes	The max.working pressure (PN) means at a room temperature of about 23°C.

Pressure Loss Chart



Temperature/Pressure



Kv & Cv Coefficients

Dimensione	Kv	Cv
1/4"	3,6	4,2
3/8"	6,6	76,0
1/2"	16,5	19,1
3/4"	25,0	29,0
1"	46,0	53,0
1"1/4	87,0	101,0
1"1/2	140,0	162,0
2"	275,0	318,0
2"1/2	500,0	578,0
3"	850,0	983,0
4"	1350,0	1562,0

More Products



4170

Ball valve F/F
full bore
aluminium lever
handle



4171

Ball valve F/F
full bore
steel lever handle



4172

Ball valve F/F
NPT threads
full bore
steel lever handle



4173

Ball valve F/F
NPT threads
full bore
aluminium sealing
butterfly handle



4174

Ball valve F/F
full bore
aluminium sealing
butterfly handle



4330

Ball valve M/F
full bore
aluminium lever
handle



4334

Ball valve M/F
full bore
aluminium sealing
butterfly handle



4574

Ball valve M/F with
hose-union
full bore
aluminium sealing
butterfly handle



4600

Ball valve with
compression ends
for copper pipe
full bore
red steel lever handle



4601

Ball valve with
compression ends
for copper pipe
full bore
blue steel lever handle